



Mar/Apr 2026 Newsletter

Message

Mt Cass wind farm construction is focused on roading from the site entrance on Mt Cass Rd to the ridgetop.

The initial cutting has been undertaken with rock lined drains and road pavement following the work.

Mt Cass walkway remains open during current construction but changed to an 'out and back' ridge top walk in order to avoid the construction site. The summit picnic table area will offer good views of the wind farm under construction. Work will soon start on a 6km extension to the walkway which begins at the end of the existing Mt Cass Walkway loop.

Warm regards,

Mt Cass Wind Farm Team



PROGRESS ON SITE

CIVIL CONSTRUCTION	
Site Compound / Laydown area	Completed
Site Roding	Underway
OFFSITE WORK	
Siemens wind turbines	Ordered
Roding within Transwaste site	Underway
SUBSTATION	
Contractor TBC	Start Nov



Project insights



Civil Works

Initial roading works is focused on building the main access road to the top of ridgeline prior to winter this year.

Road Metals trucks are busy moving aggregates from quarries around the region to site. Staff onsite now number 50 with more starting as the work advances.

Fulton Hogan are confirmed as contractor for the 22 wind turbine concrete foundation works.

Works to widen Mt Cass Rd near the site entrance are being finalised and likely to start in June.



Mt Cass Walkway

Mt Cass Walkway remains open, although the loop track is closed due to construction work in the area. Walkers can access the lookout to see the amazing views, have a picnic and watch the construction from a safe distance.

A copy of the map can be found on the Transwaste webpage:
<https://transwastecanterbury.co.nz/walkways/mt-cass-walkway-2/>

Walkers must adhere to the signs.

Wind Turbines

The temporary met mast tower located on turbine 01 position has been removed recently.

Turbines arrive to Timaru Port July/Aug 2027.



Key highlights

- Taylors Contracting is busy pushing roading up the main access. Stockpile areas for surplus soil have been established along with ponds and drainage for control of stormwater.
- Site compound and offices are established at the Mt Cass Road entrance and will be complete around the end of April.
- Mainpower is underway with the 66kV transmission line design.

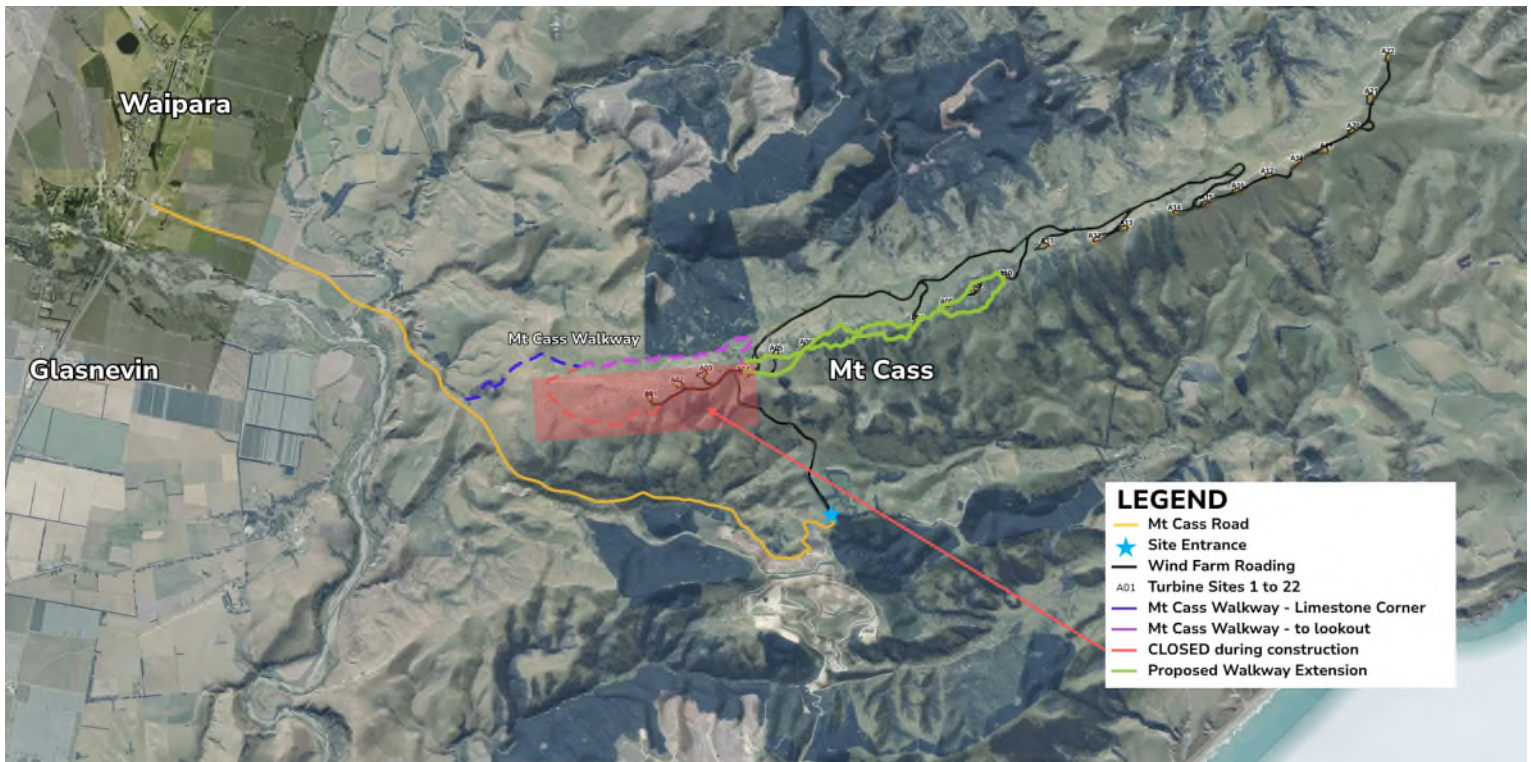
Community support



Our project manager has been invited to attend a meeting with Waipara District Residents at the Waipara Community Hall.

7pm on Wednesday 6th May 2026

Map



Getting in touch



mtcass@yinson.com



021 224 8482



www.yinson-renewables.com/mtcass