



March 2026 Newsletter

Kia ora

Welcome to the first Pahiatua Wind Farm update for 2026.

Yinson Renewables New Zealand has had a busy six months as we grow our investment in Aotearoa New Zealand's renewable energy sector. We received approval from the Overseas Investment Office for renewable energy investments in October and met with Prime Minister Rt. Hon. Christopher Luxton where we discussed New Zealand's goal to double renewable energy generation by 2050.

We have grown our New Zealand team to 12 people and now have our first New Zealand renewable energy project, Mt Cass in Canterbury, under construction which you can read about later in this newsletter.

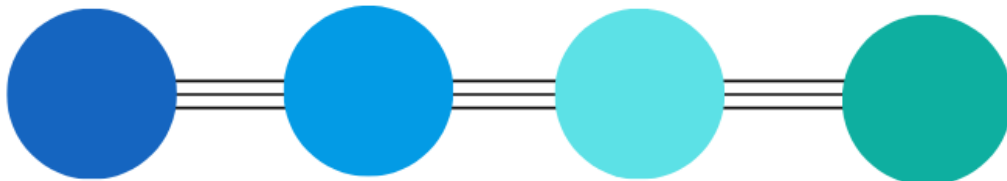
PAHIATUA PROJECT TIMELINE

EARLY-MID 2026

Site investigations

LATE 2026-EARLY 2027

Construction consents confirmed
Stakeholder Liaison Group formed



MID 2026

Procurement processes begin for turbines and construction services

EARLY-MID 2027

Construction begins



Project update

Since receiving confirmation of the Pahiatua Wind Farm Resource Consent late last year, we've been working through the consent conditions to inform detailed design for the wind farm. The aerial image below shows the proposed layout of the wind farm, with the three turbines shaded in red being removed in line with the consented plan.

The focus for the team in this half of 2026 involves site investigations to inform detailed design of the eight consented turbines, ensuring compliance with the conditions and confirming the final size and specifications of the turbines. We are also working on finding the best transport route options to get the turbines to site.

We expect to have more information on the

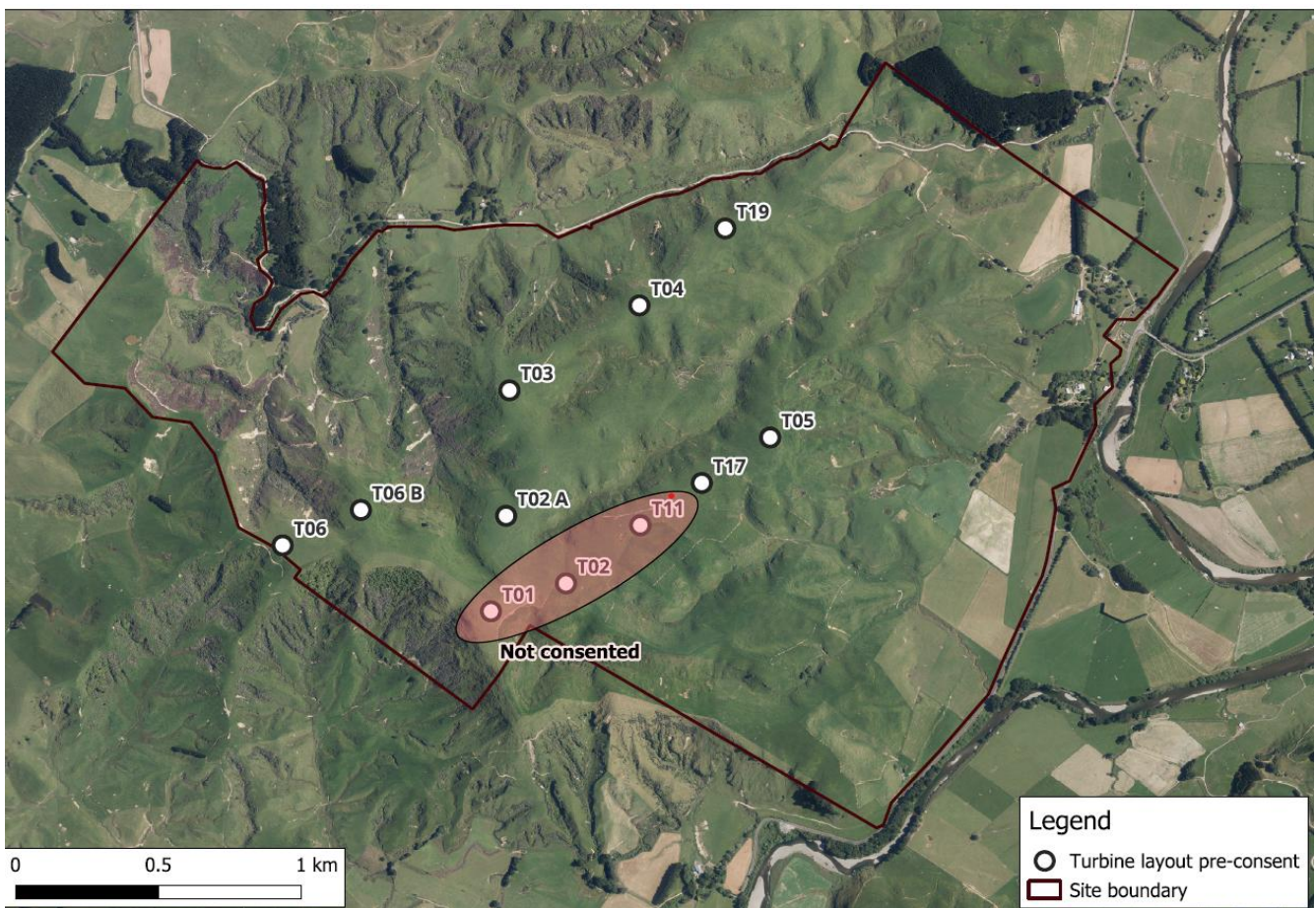
procurement process and opportunities to be involved in the construction process in our next update.

We will provide updates via this newsletter and the website on a quarterly basis, however, if you have any questions or concerns, please contact the project team using the details at the end of this newsletter.



Project highlights

- Site investigations are beginning
- Turbine design under development
- We continue to be guided by representatives from Ngāti Kahungunu ki Tāmaki-nui-a-Rua and Rangitāne o Tāmaki nui a Rua and are grateful for their mahi.





Focus on



Mt Cass Wind Farm - Canterbury

Late last year, Yinson Renewables acquired the rights to the Mt Cass Wind Farm in North Canterbury. Construction of the 22 turbine, 94.6 MW renewable energy project began this January. Once operational, it will generate over 300 GWh of clean electricity annually, powering around 40,000 homes.

The project is Yinson Renewables' first under construction in New Zealand.

Yinson Renewables New Zealand country manager Trevor Nash, says Yinson Renewables understands the need to minimise disruption during windfarm construction, and to ensure that renewable energy infrastructure brings benefits to rural New Zealand.

“Infrastructure such as a wind farm brings economic and employment opportunities and Yinson Renewables wants to ensure host communities see benefits that are meaningful for the people living and working in each community.”

At Mt Cass, this commitment includes creating and managing a conservation management area over native forest and shrubland, enhancing local biodiversity for future generations. A Community Liaison Group ensures open communication, feedback on management plans, and transparency throughout development.

The Mt Cass Wind Farm is due for completion in late 2028. If you'd like more information about the project, you can find it and follow the construction process [here](#).

Getting in touch



pahiatuawind@aurecongroup.com



027 395 9352



<https://www.yinson-renewables.com/pahiatua>